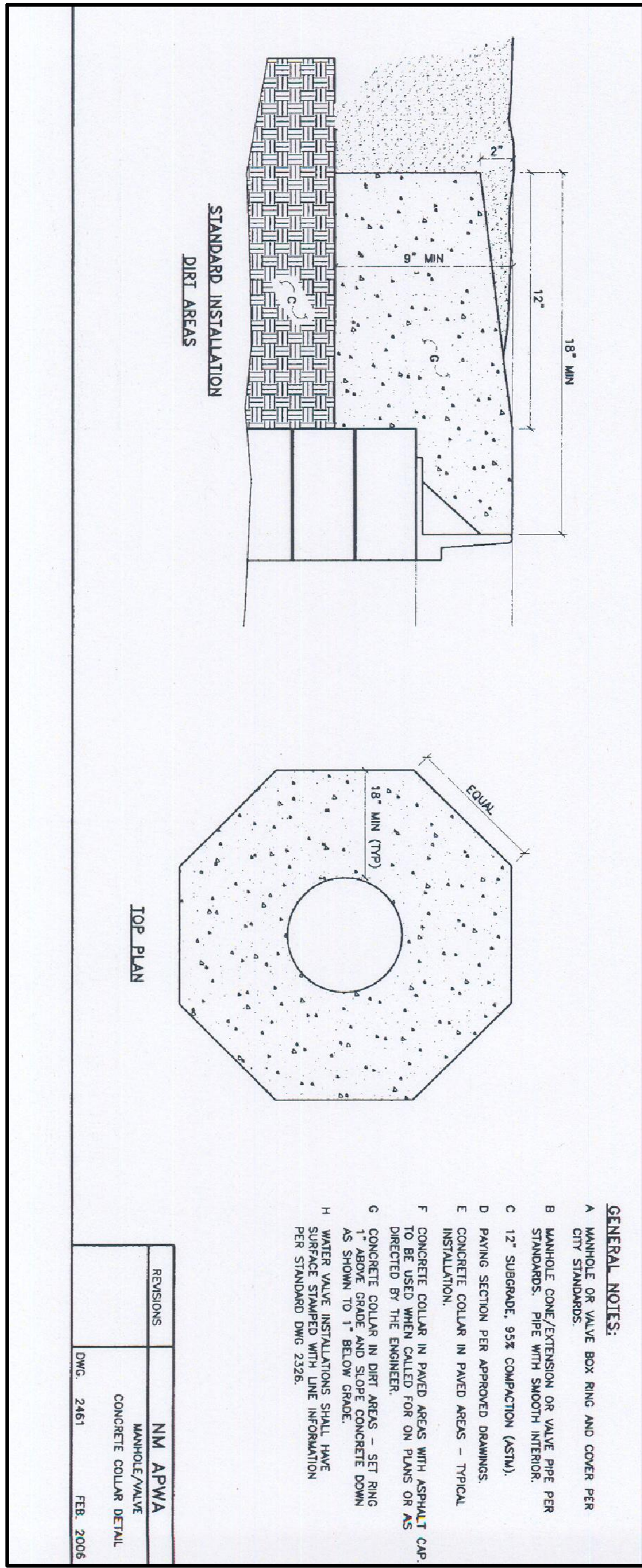
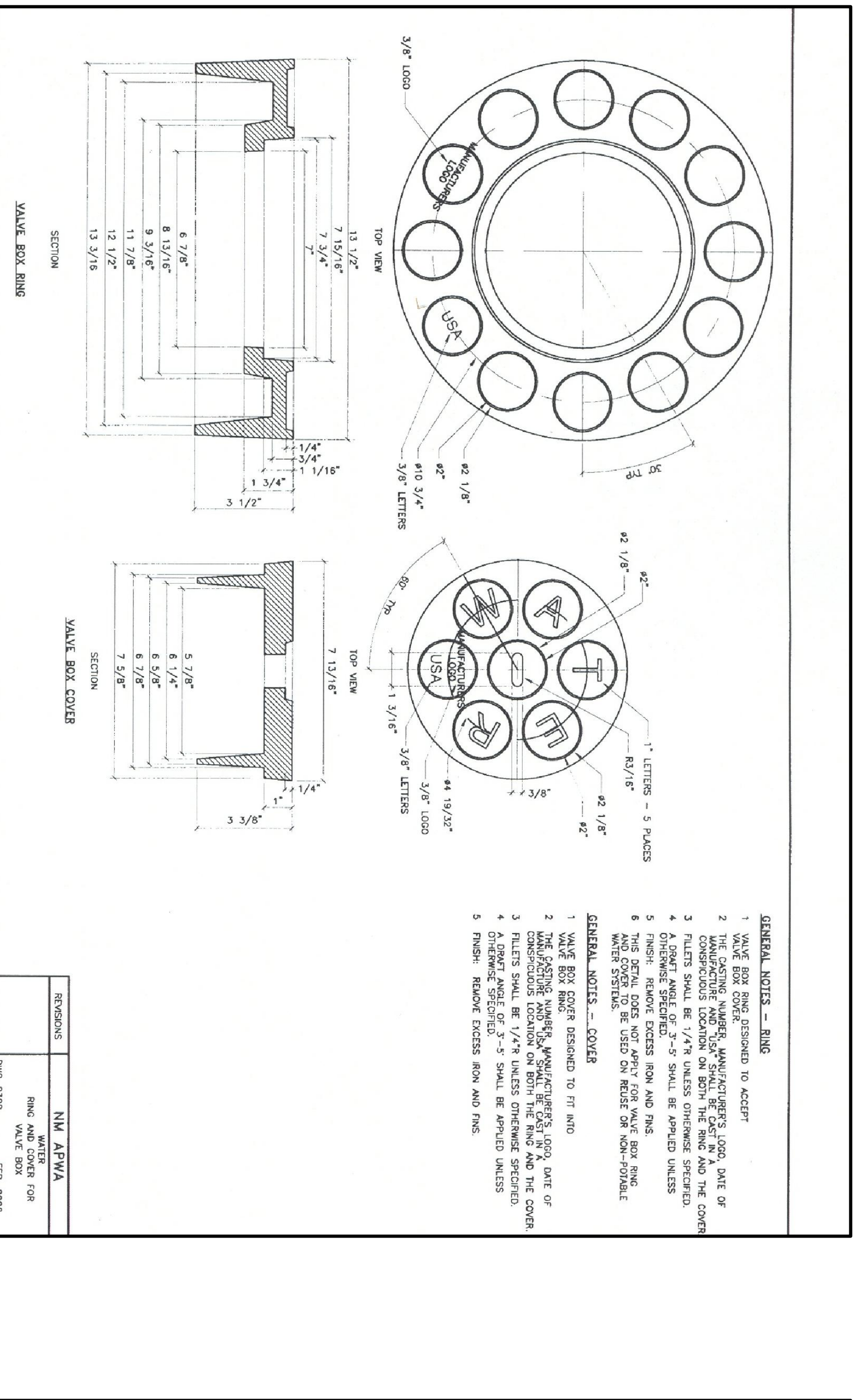


- GENERAL NOTES:**
- A MANHOLE OR VALVE BOX RING AND COVER PER CITY STANDARDS.
 - B MANHOLE CONE/EXTENSION OR VALVE PRE PER STANDARDS. PIPE WITH SMOOTH INTERIOR.
 - C 12" SUBGRADE, 95% COMPACTION (ASTM).
 - D PAVING SECTION PER APPROVED DRAWINGS.
 - E CONCRETE COLLAR IN PAVED AREAS - TYPICAL INSTALLATION.
 - F CONCRETE COLLAR IN PAVED AREAS WITH ASPHALT CAP. CONCRETE COLLAR SHALL BE SET ON PAVES OR AS DIRECTED BY THE ENGINEER.
 - G CONCRETE COLLAR IN DIRT AREAS - SET RING AS SHOWN TO 1" BELOW GRADE.
 - H WATER VALVE INSTALLATIONS SHALL HAVE PER STANDARD DWG 2128.



| | |
|-----------|------------------------|
| REVISIONS | NM APWA |
| | MANHOLE/VALVE |
| | CONCRETE COLLAR DETAIL |
| DWG: 2461 | FEB. 2006 |

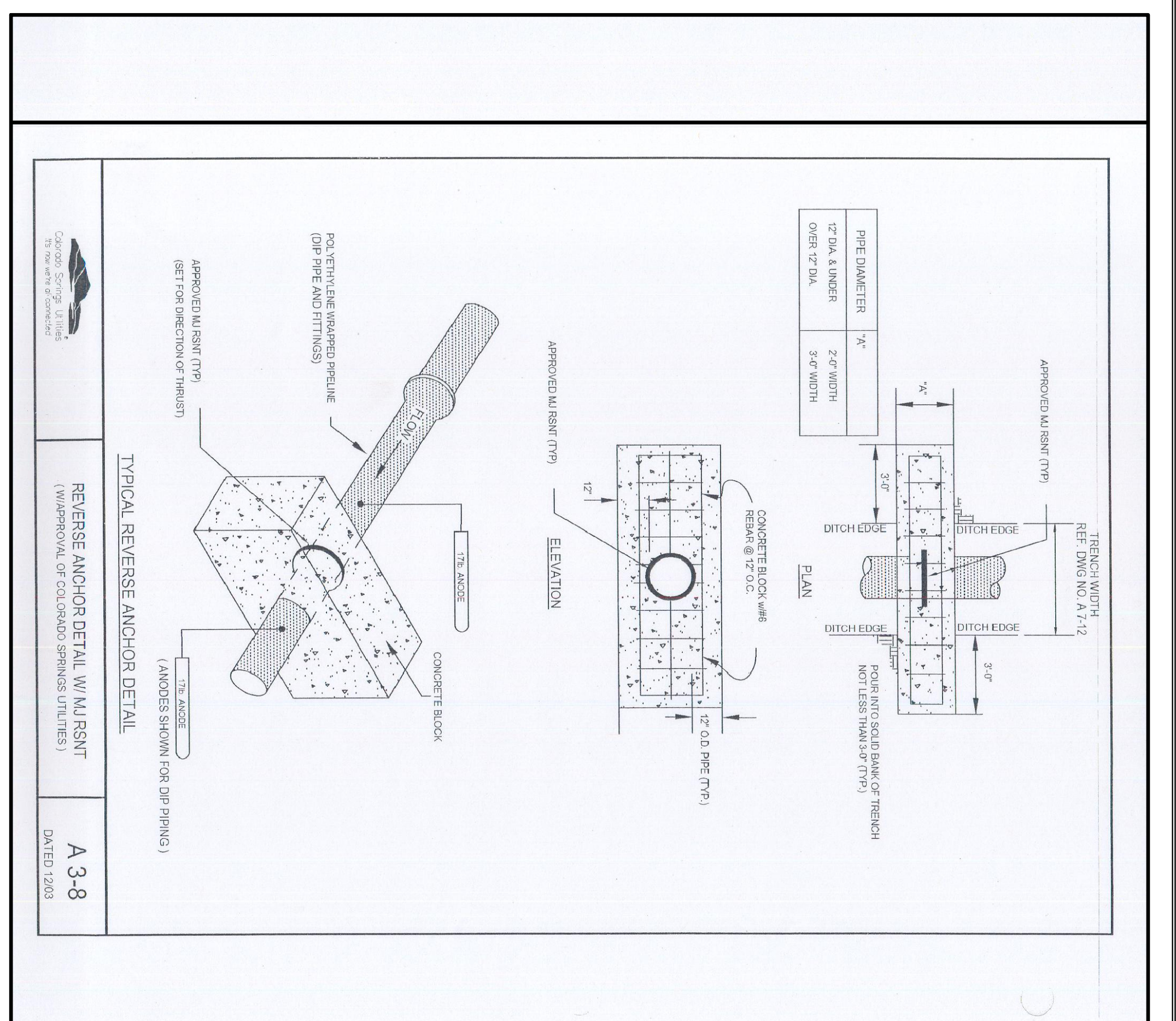
E VAULT COLLAR
NTS



- GENERAL NOTES - RING**
- 1 VALVE BOX COVER DESIGNED TO ACCEPT
 - 2 THE CASTING NUMBER, MANUFACTURER'S LOGO, DATE OF CONSTRUCTION SHALL BE 1/4" UNLESS OTHERWISE SPECIFIED.
 - 3 FLETS SHALL BE 1/4" UNLESS OTHERWISE SPECIFIED.
 - 4 A DOWEL ANGLE OF 30-45° SHALL BE APPLIED UNLESS OTHERWISE SPECIFIED.
 - 5 FINISH: REMOVE EXCESS RIM AND FIN.
 - 6 THIS DETAIL DOES NOT APPLY FOR VALVE BOX RING WATER SYSTEMS TO BE USED ON RIGID OR NON-RIGIDABLE WATER SYSTEMS.
- GENERAL NOTES - COVER**
- 1 VALVE BOX COVER DESIGNED TO FIT INTO
 - 2 THE CASTING NUMBER, MANUFACTURER'S LOGO, DATE OF CONSTRUCTION SHALL BE 1/4" UNLESS OTHERWISE SPECIFIED.
 - 3 FLETS SHALL BE 1/4" UNLESS OTHERWISE SPECIFIED.
 - 4 A DOWEL ANGLE OF 30-45° SHALL BE APPLIED UNLESS OTHERWISE SPECIFIED.
 - 5 FINISH: REMOVE EXCESS RIM AND FIN.

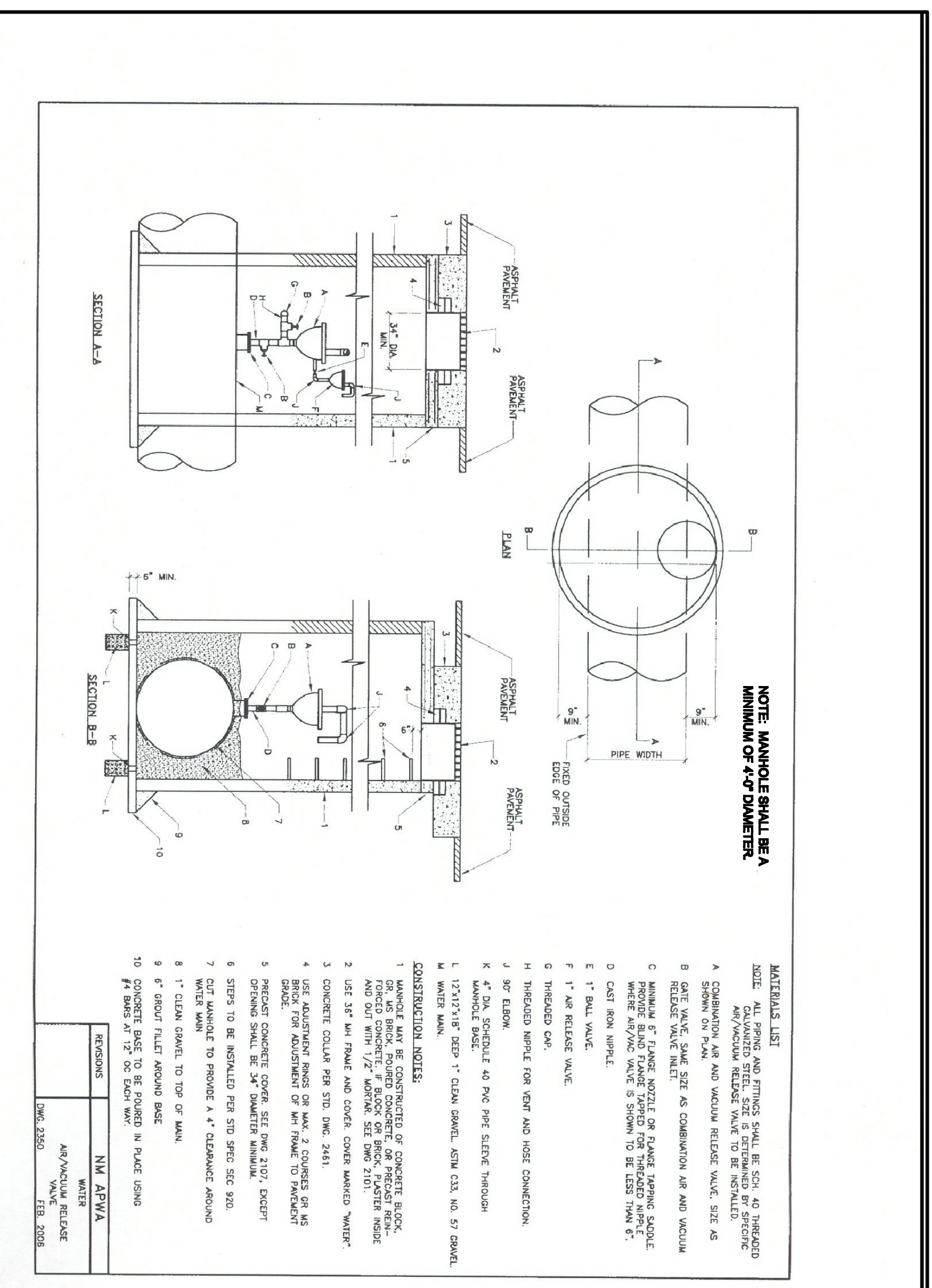
| | |
|-----------|--------------------|
| REVISIONS | NM APWA |
| | WATER |
| | RING AND COVER FOR |
| | VALVE BOX |
| DWG: 2461 | FEB. 2006 |

G WATER RING AND COVER FOR VALVE BOX
NTS



| | |
|---------------|---|
| REVISIONS | NM APWA |
| | REVERSE ANCHOR DETAIL (W/ M/RNST) |
| | (RESPONSIBLE OF COLUMN'S SPRINGS JUNCTIONS) |
| DATED: 1/2003 | A-3-8 |

F REVERSE ANCHOR
NTS



- NOTE: MANHOLE SHALL BE A MINIMUM OF 4'-0\"/>**
- MATERIALS LIST**
- A CONCRETE RING AND COVER SHALL BE 12\"/>
 - B GATE VALVE SHALL BE 12\"/>
 - C MANHOLE RING AND COVER SHALL BE 12\"/>
 - D CAST IRON MANHOLE RING AND COVER SHALL BE 12\"/>
 - E 1\"/>
 - F 1\"/>
 - G THROTTLED COV.
 - H THROTTLED WRENCH FOR GATE AND HOSE CONNECTION.
 - J 90° ELBOW.
 - K 4\"/>
 - L 1\"/>
 - M WATER MAIN.
- CONSTRUCTION NOTES:**
- 1 MANHOLE SHALL BE CONSTRUCTED OF CONCRETE BLOCK OR BRICK. BRICK SHALL BE 4\"/>
 - 2 USE 3/4\"/>
 - 3 CONCRETE COLLAR PER STD. DWG. 2461.
 - 4 USE ADJUSTMENT RINGS OR MAN. 2 COVERS OR AS BRICK FOR ADJUSTMENT OF W/ FRAME TO PARALLEL TO TOP OF VALVE.
 - 5 PREPARE CONCRETE COLLAR PER STD. DWG. 2461 EXCEPT DRILLING SHALL BE 3/4\"/>
 - 6 STEPS TO BE INSTALLED PER STD. DWG. 2461.
 - 7 CUT MANHOLE TO PROVIDE A 4\"/>
 - 8 1\"/>
 - 9 4\"/>
 - 10 CONCRETE RING TO BE PAINTED IN PLACE USING #4 BARS AT 12\"/>

| | |
|-----------|--------------------|
| REVISIONS | NM APWA |
| | WATER |
| | AIR/VACUUM RELEASE |
| | VALVE |
| DWG: 2390 | FEB. 2006 |

H AIR/VACUUM RELEASE VALVE
NTS

NOTICE OF EXTENDED PAYMENT PROVISION - THIS CONTRACT ALLOW THE OWNER TO MAKE PAYMENT WITHIN 60 DAYS OF THE DATE OF COMPLETION OF WORK. IN THE EVENT OF AN UNDISPUTED REQUEST FOR PAYMENT.